

LAKE CARMI ASSOCIATION NEWS

Brought to you by the Lake Carmi Camper's Association, Inc., & other fine sponsors

In Loving Memory of Our Late Editor & Dear Friend, Larry Myott



**After the
Winter ...**

© Ellen Richards Photography



The first weekend of May was filled with sunshine and warm temperatures, giving buds and blossoms an opportunity to thrive. The early morning sun seen here was captured by Ellen Richards from her deck on Mother's Day.

Photographs courtesy Ellen Richards

A New, Busy Season Begins at Lake Carmi

President's Report



By Peter
Benevento,
LCCA
President

We savor many intangible moments in life. You can't touch them, but you definitely feel them. They lighten our moods, and we

always look forward to them.

Opening camp is one of those moments. The anticipation - even excitement - that builds as spring approaches is more than enough to dust off winter doldrums and re-energize our spirits. Opening camp is like getting a fresh start. It can be a time for setting new goals or no goals at all. Some eagerly plan projects while others open the door, clean, and just relax for the entire summer. In camper's terms, a fine goal indeed!

Whatever your pleasure, opening camp is a rite of passage for some of the best times of the year. Welcome to the 2022 Lake Carmi season!

Your LCCA Board of Directors met virtually and regularly over the winter, preparing for the coming season.

Our Celebrate Lake Carmi events begin by collaborating with the Town Recreation Committee to stage the third annual Chase for the Lake Triathlon. Entrants will get some of the best views of Lake Carmi by

running, biking and kayaking near, around and in the lake. We are proud to showcase Lake Carmi in this manner and look forward to growing this event each year. So please reach out to family and friends and invite them to participate. The triathlon is scheduled for Saturday, June 25. Details are forthcoming.

Summer events continue with Light up Lake Carmi, the Pontoon Boat Race and a concert by a 50-piece band in the town park. The theme for Light Up Lake Carmi is *Lake it Easy*, and we invite you to illuminate your favorite pastime on the lake. Certificates will be awarded for Most Inviting, Most Creative, and Most Patriotic.

After a two-year absence due to the pandemic, we resume the pontoon boat relay race this summer. We are forming teams to represent the various shores, so if you are interested and have not yet entered the race, please send your name to me at president@lakecarmivt.com. Including the horsepower of your pontoon boat would be helpful. The race is the weekend of July 2. Details are forthcoming.

The holiday week continues with a concert in the town park on Thursday, July 7, at 6:30 p.m. The concert will again be coupled with the Franklin and East Franklin Churches' ice cream

social at 6 p.m. Ice cream and cake for dinner ... It doesn't get better than that!

And don't forget the Franklin Fire Department Chicken Barbecue on Saturday, July 9. It's a very nice conclusion to an event-filled week.

On July 29, the LCCA sponsors a golf tournament at the Enosburg Falls Country Club to benefit the Lake Carmi Community Foundation. Plans are to make the tournament an annual event, alternating each year between the Enosburgh and Richford Country Clubs. More details are coming. We also plan to extend the concert series.

The one event you may notice is missing is our annual fireworks. We decided not to continue with the July 3 fireworks at the north end boat launch due to cost and competition. The cost for the fireworks display nearly doubled. Moreover, there are other firework displays that have established a place at the lake in recent years, and having one more at the north end seemed excessive. We can always reconsider in future years.

Efforts to improve the water quality in the lake were ongoing over the winter. We remained fully engaged with VT DEC and other partners to ensure our water quality initiatives

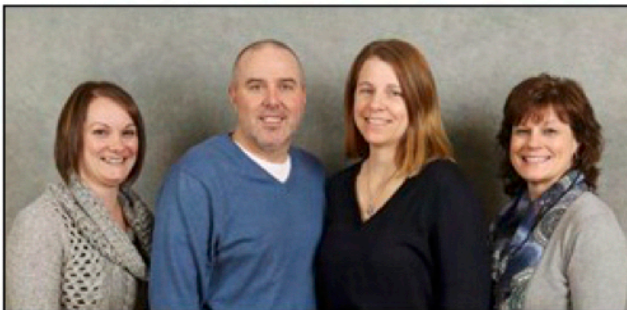
See Report, pg. 5



An Independent Agency
Auto – Home – Watercraft – Recreational
Farm – Business –
Workers Compensation

802-933-4359 info@hullinsure.com
www.hullinsure.com
37 Pearl Street, Enosburg Falls, VT

Local agents with a Vermont
product supporting our
communities, local businesses
and farmers.



Watershed Work Continues at Carmi

Franklin Watershed Update



*By Tucker
Wehner,
Coordinator,
Franklin
Watershed
Committee*

I hope you all had a safe and happy winter season.

We at the Franklin Watershed Committee have spent the winter working hard to get ready for the upcoming season. Now that the weather is getting warmer, we are getting excited to get back to the lake!

We have started sampling the tributaries already and plan to continue throughout this summer. The purpose of our sampling efforts is to track the amount of phosphorus, a nutrient that can lead to cyanobacteria blooms in our waterways. By tracking the levels of phosphorus in our tributaries, we have a better understanding of where the nutrient is coming from and can then focus our effort on implementing projects to reduce the amount of phosphorus before it gets to the lake.

We want to thank everyone who has helped us with this objective whether that be letting us sample on their property or helping us get organized and funding to test the samples. We are super excited to see what this year brings. You can stay up to date with our sampling efforts via franklinwatershed.org.

In addition to sampling, continue to do everything we can to help improve water quality up at Carmi. We are continuing with the LakeWise program. The LakeWise Program is an Agency of Natural Resources initiative that awards lake-friendly shoreland property, including that of state parks, town beaches, private homes, and businesses. This past year we assessed six camps, four of which were awarded the LakeWise award.

We at the Franklin Watershed Committee were fortunate to team up with the Franklin County Natural Resources Conservation District and Fitzgerald Environmental Associates, and we have received a grant to conduct a watershed-wide inventory and assessment of current Best Management Practices in place, as well as identifying new BMPs for potential implementation. This will take place over the next two years, and we will keep you updated as the work begins.

We will also continue closely monitoring and reporting any cyanobacteria (blue-green algae) blooms at Carmi this year. Last year we kept a photo journal of photos sent to us from folks around the lake. This was not an official report to the state, but we used it to emphasize the necessity of the work we do. There is an official state cyanobacteria tracker online. You can find more information about cyanobacteria and access the link to the state tracker where you can make an official report at <https://www.franklinwatershed.org/tracking-cyanobacteria-blooms.html>.

As the season gets closer and things get a bit busier, we will update folks through this newsletter, on our website, and on the Lake Carmi Life Facebook page. We look forward to seeing you all this summer and wish you a happy spring and safe travels back to Lake Carmi!

All Trails Lead to Lake Carmi In the Summer

By Suzanne "Suzi"
Hull-Casavant

Spring is here, summer is right around the corner, and all trails lead to the lake!

In my youth they also led all around the lake. It was nothing to see kids and adults alike cross in front of our camp as they traveled down the shore to meet up at another camp. The trails – crossed with roots and scenic boulder overlooks on the shore – were as familiar as the sidewalk outside my house.

I imagine many of you have those same paths, paths loaded with memories, scraped knees, and ending at the lake. Days of swimming, daydreaming, picnicking among the meadows and pine trees, creating sun dappled days that fill your memories in the deep of winter.

My path usually led down the shore to Bill and Gwen Greene's camp where I could find my cousin Kim.

All day was back and forth along the path or swimming up and down the



shore, while floating and hauling a giant tractor tube to float and jump on. Someone had tied a rope around the middle, so it was like a figure eight. The trick was for Kim and me to stand up in unison on each end and then, if lucky, get one bounce in before we were tossed in the lake.

Evening would usually sport a belly rash from pulling ourselves up and over that tube all day, and occasionally the stubbed toe from a surprise root that for sure wasn't there the day before.

Soon those days arrive where we, a bit more gingerly, head down to the lake, maybe now to settle in a comfortable chair at the end of the dock with a cup of coffee to start the day off right.

Spend the day puttering around, enjoying the various projects we have been thinking about all winter, cleaning out the corners where mice or chipmunks have left winter debris to be swept away. Creating our own corners

and spaces for quite interludes. The end of the daylight bringing on a traditional cruise around the lake.

All-in-all, time well spent in youth and those other years. Regardless of the age then and now, I will mark my summer days with a healthy amount of pine pitch on the bottom my feet that won't come off till the far-off fall.

Welcome back to Lake Carmi our happy lake.

ON A LIMB

TREE SERVICE

Tree Removal • Tree Trimming
Stump Grinding • Chipping
• Bucket Truck Services •

Jerry Parent, Owner Operator
Home: (802) 933-2376
Cell: (802) 782-2678
Free Estimates • Fully Insured

Shop Owner: Jennifer Bessette

Florist and Gift Shop
Franklin County Delivery
LCCA Member Owned

Summer Hours
Monday & Wednesday 9-3pm
Tuesday, Thursday & Friday 9-5pm
Saturday 9-12pm

63 Grand Ave, Swanton, VT 05488 | (802) 868-7226

FLOWERS
By Debbie
EST. 1981

Learn more today! www.jennysbarnvt.com

Jenny's Barn
Franklin, Vermont
Wedding Venue
Now booking 2023!

Jenny's BARN



NOTCH

NORTHERN TIER CENTER FOR HEALTH
FEDERALLY QUALIFIED HEALTH CENTER

www.notchvt.org

Enosburg Health Center Providers



Karen Towle, APRN

Kristen Heller, MSW

Lynn McMorrow, APRN

Sharon Stoll, MD

Jonathan Speer, MPAS

Enosburg Health Center • 382 Main St., Enosburg Falls, VT 05450 • (802) 933-5831

Alburg Health Center
Industrial Park Road
Alburgh, VT 05440
(802) 796-4414

Georgia Health Center
4178 Highbridge Rd.
Fairfax, VT 05454
(802) 528-2600

Richford Dental Clinic
44 Main St., Suite 400
Richford, VT 05476
(802) 255-5520

St. Albans Pharmacy
3 Crest Rd.
St. Albans, VT 05478
(802) 527-6700

Fairfax Health Center
1199 Main St.
Fairfax, VT 05454
(802) 849-2844

NOTCH Pharmacy
44 Main St., Suite 201
Richford, VT 05476
(802) 255-5530

Richford Health Center
44 Main St., Suite 200
Richford, VT 05476
(802) 255-5500

Swanton Health & Dental
26 Canada St.
Swanton, VT 05488
(802) 868-2454

Fairfax Pharmacy
997 Main St.
Fairfax, VT 05454
(802) 849-2101

NOTCH Primary Care
12 Crest Rd.
St. Albans, VT 05478
(802) 524-4554

St. Albans Health Center
3 Crest Rd.
St. Albans, VT 05478
(802) 524-4554

Swanton Rexall
13 York St.
Swanton, VT 05488
(802) 868-3338

Report, from pg. 1

continue. Recently, FWC President Rob Evans testified before the Vermont Legislature's House Committee on Natural Resources, Fish & Wildlife. Rob clearly conveyed the overwhelming need for the State to remain focused on our clean water initiatives. Rob's testimony also exhibited the passion we all have for Lake Carmi and our desire to improve it. Rob's testimony will be available on both the Franklin Watershed Committee and the LCCA websites. (See pg. 8 for excerpts from Rob's testimony.)

The UVM research platform was placed on the lake in mid-April, streaming data back to scientists in Burlington. The data will be used in part to gauge the startup date of the aeration system. This is done in conjunction with VT Dept. of Fish & Wildlife to ensure no impact on spawning walleye. This is the fourth year of operation for the aeration system. Modifications to enhance cooling at the compressors was completed last fall, and we expect a flawless operation over the summer.

The TMDL Coordination Team met twice since last fall. A major outcome was the updating of the Lake Carmi Crisis Response Plan (CRP). The CRP includes Critical Path Projects to improve our watershed. We are committed to seeing those projects implemented. Pursuant to the CRP, the presence of UVM Extension remains in the watershed consulting on best agricultural management practices such as injection manure and cover cropping.

We also remain committed to the Franklin Watershed Committee (FWC) and its efforts to secure grant funding for water quality projects. This summer the FWC will work directly with the local conservation district and an environmental firm to identify potential projects in the watershed. We look forward to this collaboration, the first of its kind at Lake Carmi.

We are regularly updating our website at lakecarmivt.com. Webmaster David Krayesky and LCCA Director John Costa have been diligent in keeping the website up to date and informative. We hope you visit it often.

This is the first of five newsletters to be published this season. We will also print an updated LCCA Directory. If you would like to contribute a newsletter article, please submit it to editors@lakecarmivt.com. Last year campers submitted articles on how they were introduced to the lake. We encourage this type of storyline, as well as all other Lake Carmi or Franklin-related articles. Please be positive.

Our 2022 LCCA Membership Drive recently kicked off with membership application mailings. Thanks to all who have responded. If you haven't joined yet, please do. We need your support to make Lake Carmi "One Happy Lake." We are planning a Membership Day for Saturday, June 11 from 9 a.m. to 1 p.m. at the Franklin United Church. If you have already joined, please stop by to pick up your directory and window and membership cards. Coffee and donuts will be served!

Our next LCCA Board of Directors meeting is Thursday, May 26 at 6:30 p.m. at the Franklin United Church. Please check our calendar of events for all future meetings. All meetings are open to the public. If you would like to be on the agenda, please contact me at president@lakecarmivt.com.

I've worn out my keypad, so I will leave you until the June newsletter. Please be safe opening camp. Remember that all items get heavier over time. Especially for us "experienced" campers, so don't hesitate to ask for help.

Stay healthy and see you around the lake!

Richford Country Club



Challenging Nine Hole Course

249 Golf Course Road

Richford VT, 05476

Call: 802-848-3527

Come Out and Play!

\$5.00 off regular priced green fees
with this ad



Weekly Delivery Schedule:



Free delivery; no minimum.

Mon-Fri 7am-6pm

Saturday 8am-4pm

Sunday 9am-1pm

(Seasonal Sunday hours from
April 3rd until June 26th)

Follow us on Facebook!

TAKE THE DRIVE ON 105 FOR YOUR NEXT VEHICLE



Get \$25 Off
in Our Service
Department When
You Mention
This Ad

Come On In
for Your
Alignments

Extreme
Undercoating
Services

Full
Maintenance
on Most Makes
and Models

Full Vehicle
Detail
Department



Scan Here To Message Us
On Facebook Messenger

Contact Us

57 Missisquoi St, Enosburg Falls, VT 05450

www.champlainchevy.com

802.933.4455

Take The Drive On 105



Spring Worth the Wait in Franklin

By Ethan Dezotelle

"If we had no winter the spring would not be so pleasant."

Those are the words of Anne Bradstreet, a poet among the earliest Puritan settlers in Salem, MA., in 1630.

Bradstreet traded a life of leisure as an English aristocrat for the brutal hardships of the New England wilderness. Her work is a reflection of those struggles.

The common ground I share with Bradstreet and her Puritan ilk is smaller than the tiny island at the south end of Lake Carmi. But as spring got underway in fits and starts this year, I agreed that the frigid slog of winter made the arrival of warmth, swollen buds on trees, and the rich green of new grass all the sweeter.

The day I crested the hill on Route 120 after work and saw the ice was gone from the lake ... I don't know if hitting the jackpot on a scratch ticket would be as exciting. And the first time I left the house without stopping for a cumbersome coat and heavy boots was magical.

Now, sitting on my porch, I see not just signs of spring, but signs of campers. A fresh swirl of activity to go with the reborn surroundings. The sound of a truck pulling a boat is always more welcome than the rumble of a snowplow.

Next winter, I'll hold these warm memories close, remember Bradstreet's words, and look forward the another round of fresh exhilaration.



Looking north across a frozen Lake Carmi in February.

Photograph courtesy Alison Dezotelle

Latin American
Mexican
Vegetarian

Dine In
Take Out



383 Main St., Enosburg Falls, VT
(802) 933-3149

Garcia's
Bistro



Dianna Benoit Kittell

Broker, Realtor, ABR, SRES

802.782.4342

Email: diannabenoitvt@kw.com

Visit: diannabenoitvt.kw.com



Clarity Real Estate

186 Main St. P.O. Box 17
Enosburg Falls VT, 05450



Vermont Maple Gift Shoppe



Gifts, Gift Baskets
Maple Syrup & Maple Products
Collectables, Vintage & Antiques

Pam Greene & Dave Bennion

5320 Main Street
Franklin, Vermont, USA 05457

Phone: 802-285-6523
Fax: (208) 379-2838

E-mail: info@vermontmaplegifts.com www.vermontmaplegifts.com

The Quincy Hotel



57 Depot St., Enosburg Falls 933-8300

Daily & Weekly Rates

All Jobs Small

Carpenter/Handyman

Jeffrey Richards
Lake Carmi, Franklin VT 05457

alljobssmall@hotmail.com
802-272-3054

BOAT
Headquarters

"Worth the Drive"

BOATS:
Four Winns
Sylvan
SunChaser
Smokercraft
Starcraft
Starweld
South Bay
War Eagle

MOTORS:
Mercuriser
Volvo Penta
Mercury
Evinrude
Yamaha

DOCKS & LIFTS:
Floe
Bertrand

KEVIN LOTHIAN
Sales



Rte. 78 • Swanton, VT 05488
T: 802-868-4444 • F: 802-868-7190
E: boatheadquarters@myfairpoint.net
W: www.boatheadquarters.com

Weekly Dinner Specials Hand Crafted Cocktails

Open Wednesday-Friday at 3pm
Saturday 11am-9pm. Sunday 11am-8pm

A father and son owned family restaurant
Dennis & Tyler Sheridan

Check out what's happening this week at
www.facebook.com/phoenixhouse1835/

THE PHOENIX HOUSE
est. 1835

933-8400

7 Potato Hill Rd W. Berkshire



Boston Post Dairy, LLC

Vermont Farmstead Cheese

Top of the Hill Maple Products
Back to Nature Goat Milk Soap

Bob, Gisele, Anne,
Theresa & Susan
2061 Sampsonville Road
Enosburg Falls, VT 05450

Phone 802-933-2749
Fax 802-933-8334
www.bostonpostdairy.com
bostonpost@bpd.comcastbiz.net



MARK E. LARIVEE

PLUMBING, HEATING & ELECTRICAL

When Quality Matters
RENOVATIONS, REPAIRS, NEW CONSTRUCTION

285-6808 OR 933-2509

mlarivee82@gmail.com

FULLY LICENSED AND INSURED

BEST CHOICE

PEST CONTROL
Offering solutions to your pest problem

James Bushey

Owner - Operator

(802) 782-9708

E-Mail: bushey45@franklinvt.net

Avery's Snowplowing, Lawncare and Excavating

Megan Stanley: 802-363-6882

Avery Stanley: 802-309-5203

Family Owned and
Operated

P.O. Box 67
Montgomery, VT
05470



Legislative Testimony of Rob Evans, FWC President & LCCA Vice President

Editor's note: FWC President Rob Evans testified before the Vermont Legislature's House Committee on Natural Resources, Fish & Wildlife recently regarding Lake Carmi. Excerpts from that testimony follow. A complete transcript can be found at lakecarmipvt.com.

My name is Rob Evans, and I'm the President of the Franklin Watershed Committee, Vice President for the Lake Carmi Campers Association, and a member of the TMDL Coordination Team. I have been the owner of a camp on Lake Carmi for 14 years and have raised my three children on its shores. I am proud to say that I have established some wonderful friendships with other camp families, with members of the Franklin Select Board, with members of the Franklin Community, our farming families, and many state water quality professionals with whom I have worked.

I first want to say thank you to this committee for supporting our clean water efforts. While I know that maintaining clean water is and will continue to be a state priority, we are grateful for your continued support for our clean water initiatives ... The extensive algae blooms we experienced several years ago, the public outcry, the fear and anxiety over the health risks associated with these blooms, the tensions between our campers, town residents, farming community and elected officials, boiled over into some very heated debates about how to manage this critical clean water dilemma.

I also want to express how grateful we are for the collaboration we have had with the Department of Environmental Conservation I also want to say that while we may not always agree with our agricultural partners, I do feel that through a lot of soul searching, self-reflection, and a lot of hard work, our relationships across all sectors are much better today than they have been in the past ...

To highlight the crisis of where we find ourselves today, in 2018 ... the Legislature designated Lake Carmi as a Lake in Crisis, which required the development of a state crisis response plan and the identification of critical pathway projects to address the continuing water quality challenges that we have been experiencing.

Since the Lake in Crisis designation, we have seen ... the deployment of an in-lake aeration system consisting of 80 diffusers that pump oxygen into the bottom of the lake in an effort to enhance mixing of the water and reduce the extent of the algae blooms we have been experiencing.

Our farm community has deployed a manure injection system designed to reduce the overland manure spreading in our watershed.

Working with our camper community, we have increased our education and outreach work to reduce the impacts of shoreland erosion, septic systems and private roads and driveways.

With the help of our friends at the University of Vermont and other state scientists in a number of state agencies, we are collecting an enormous amount on in-lake, tributary, ground water and soil sample data that will lead to development of science based strategies to help us meet our clean water goals.

See Testimony, pg. 13



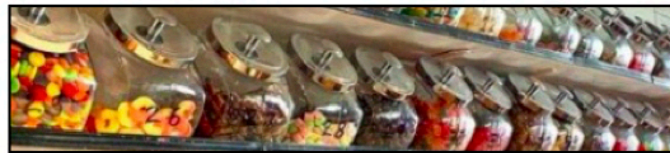
VT & USA-made ...

Housewares	Crafts	Art
Games	Stickers	Game
Greeting	Jewelry	Nights
Cards	Notebooks	
Toys	Puzzles	Delivery
Books	Fashion	within 9
Decor	Gift Cards	miles

All in an 1870s store brought back to life

268 Montgomery Rd.
East Berkshire, Vt 05447
barnowlbistrovt@gmail.com
barnowlcountrystore.com

Monday-Friday
8 a.m.-8 p.m.
Saturday-Sunday
9 a.m.-8 p.m.



**BECOME
A MEMBER
OF THE
LAKE
CARMI
CAMPERS
ASSOCIATION**

NAME: _____

Renewal ☐ New ☐ Gift Membership ☐

Attached is my check for 2022 dues, in the amount of \$50, made payable to LCCA, Inc.

Cottage 911 Mailing Address, if applicable: _____

Summer Mailing Address: _____

Winter (Off-season) Address: _____

Cottage Telephone: _____

Off-Season Telephone: _____

Email address: _____

You'll get the season's LCCC Newsletters (May-Sept.) by email, as well as other useful info, with no spam or advertising.

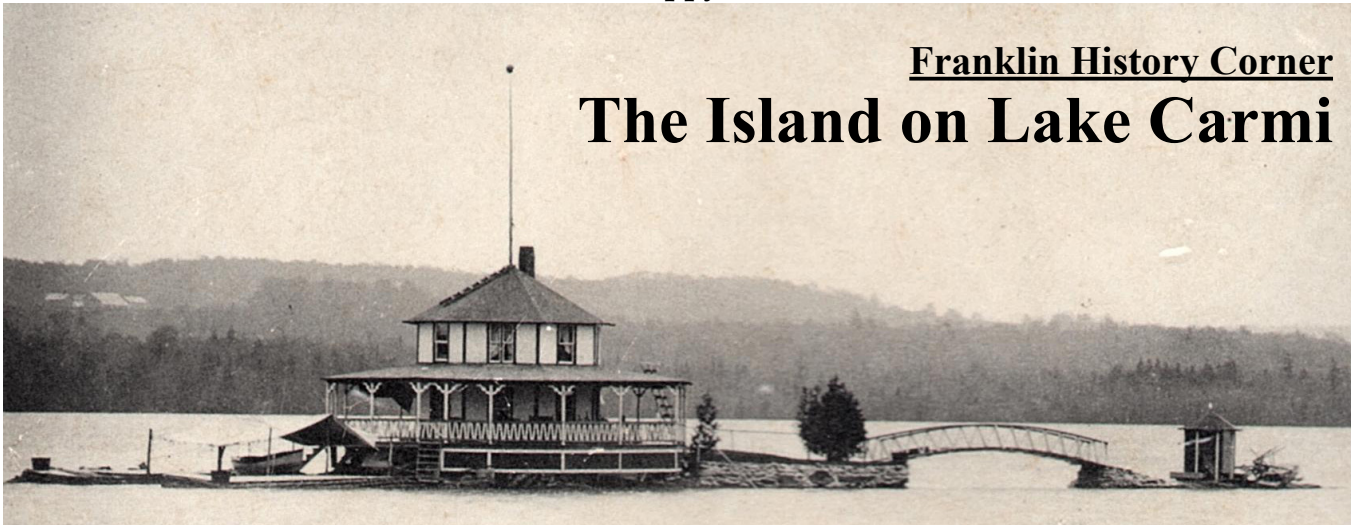
LCCA members are committed to Lake Carmi. Some volunteer to help out; some enjoy a week or more in our pristine setting. Please become a member and do what you can. Become an official LCCA member by sending your membership form and annual dues check today. If your information hasn't changed in the past year, just send your dues check. Comments are always welcome. Thanks!

I would like to contribute to the
LCCA Water Quality Fund:

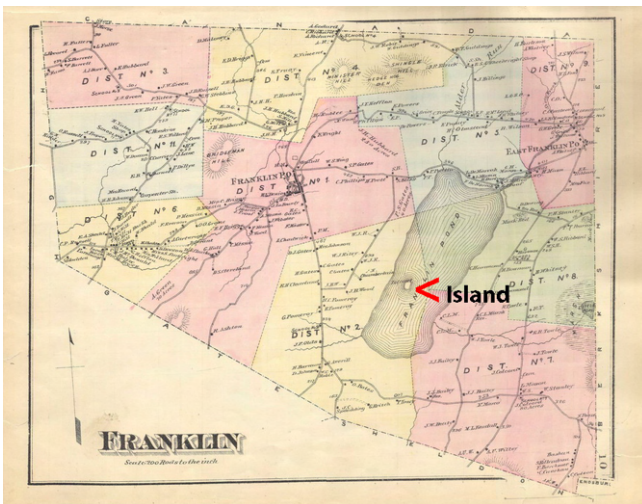
\$ _____

I would like to contribute to the
Lake Carmi Community Foundation

\$ _____

Franklin History Corner**The Island on Lake Carmi**

The "Round Camp," which was built on Lake Carmi's tiny island by Dr. R.W. Adams in the early 1900s. The octagonal camp was later moved from the island to Patton West Shore.

**By Dave Bennion**

With a 1375-acre surface area, Lake Carmi is the fourth largest natural lake located entirely within Vermont. It is 7.5 miles around, averaging about 20 feet in depth, and is 33 feet at its deepest point.

The lake supports northern pike, walleyes, and other warm water species. The lake drains north into Quebec's Pike River, then into Lake Champlain. Lake Carmi was once much larger, and was known as Franklin Pond and Silver Lake. In the thousands of years since the last ice age, the southern end of the original lake has silted in, creating wetland forests and the third largest peat bog in Vermont.

And Lake Carmi has an island!

Although small, the island in Lake Carmi has a long and interesting history. In 1906, Doctor R.W. Adams purchased the island. It was located about 600 feet from the shore of W. J. Riley's farm on the Westcott Shore,

and he built an octagonal cottage there. He, his relatives, and other campers enjoyed the island.

In later years, William Patton bought the "Round Camp." With James Hanna and his sons, one winter he maneuvered that camp, intact, onto rollers. They drew it onto the ice with a team of farm horses, down to the Patton

West Shore. There, it was disassembled and used to build a camp, the first camp on the camp road.

In 1931, ownership of the island passed to Frank & Jennie Manuel, then to R. W. Adams Jr. in 1946, adding Elaine Adams in 1958. In 1961, ownership passed to Walbridge & Helen Whiting, then to Wanda Robinson in 1982, and to Olin and

Coralyn Samson in 1983. The final transfer of ownership was to Katie Thompson in 2016.

The island is now home to an American flag, seagulls, herons, eagles, and occasionally fireworks.

Want to join the Franklin Historical Society? Email us at historical@franklinvt.net. Not from the Franklin area but still interested in Franklin History? We can add you to our Friends of Franklin Historical email list. Just email us at historical@franklinvt.net. A History of Franklin, 1789-1989 is available for sale for \$20 at the Haston Library and the Franklin Town Clerk's Office. Check out our website at www.franklinhistoricalsociety.com.

Below: A couple spends time rowing just off the the shore of Lake Carmi's tiny island in 1920.

Above left: A map of Franklin, featuring the location of the island on Lake Carmi.



FRANKLIN COUNTY MAY/JUNE 2022 CALENDAR OF EVENTS

SATURDAY, MAY 14

Annual Plant Swap
10 a.m.-noon, Haston Library, Franklin. Annuals, perennials, houseplants, seeds.

WEDNESDAY, MAY 18

Summer Play Auditions
6-8 p.m., Opera House at Enosburg Falls, Railroad St., Enosburg Falls. Auditions for 'Tony Hawks' Midlife Cowboy. Looking for actors, singers, piano & guitar players. Performances July 28-31. promo.fotoh@gmail.com.

FRIDAY, MAY 20

Laura Rasco
6:30 p.m., The Abbey Pub, 6212 Rt. 105, Enosburgh. theabbeyrestaurant.net.

SATURDAY, MAY 21

Atlantic Crossing
5 p.m., Meeting House On the Green, E. Fairfield. Celtic music. \$10. Free under 16. meetinghouseonthegreen.org.

SUNDAY, MAY 22

Summer Play Auditions
1-3 p.m., Opera House at Enosburg Falls, Railroad St., Enosburg Falls. Auditions for 'Tony Hawks' Midlife Cowboy. Looking for actors, singers, piano & guitar players. Performances July 28-31. promo.fotoh@gmail.com.

THURSDAY, MAY 26

LCCA Board of Directors Meeting
6:30 p.m., Franklin United Church Fellowship Hall, Franklin.



FRIDAY, MAY 27

Chris & Erica
6:30 p.m., The Abbey Pub, 6212 Rt. 105, Enosburgh. theabbeyrestaurant.net.

SUNDAY, MAY 28

Daniel Senie & The Milkhouse Heaters
7 p.m., The INN, 241 Main St., Montgomery. Folk & Americana. theinn.us/cea-at-the-inn.

MONDAY, MAY 30

Franklin Memorial Day
10:30 a.m., Main St., Franklin. Parade, traditional program on Franklin Town Green & Franklin Town Hall, 5th grade BBQ fundraiser. (802) 285-2217, brennasturtevant@gmail.com to join parade.

THURSDAY, JUNE 2

Vermont Dairy Festival

Through Sunday, June 5, Enosburg Falls. Scholarship pageant, concerts, midway, Milk Run, much more. vermontdairyfestival.com.

TUESDAY, JUNE 7

Traveling in the Mind in the Time of COVID
Time TBD, Haston Library, Franklin. Franklin County artists Barbara "Bobbie" Flack & Orah Moore present their photographs. Snacks & drinks.

SATURDAY, JUNE 11

LCCA Membership Day
9 a.m.-1 p.m., Franklin United Church Fellowship Hall, Franklin. Free coffee & donuts.

Beg, Steal or Borrow
5 p.m., Meeting House On the Green, E. Fairfield. Bluegrass. \$10. Free under 16. meetinghouse-onthegreen.org.

FRIDAY, JUNE 17

Concert On the Lake
7 p.m., Abbott Camp, Hammond Shore, Franklin. Come by boat.

The Joy of Jazz Improv w/Ray Vega
2 p.m., Cold Hollow Sculpture Park, 4280 Boston Post Rd., Enosburg Falls. coldhollow-sculpturepark.com

ONGOING

Enosburg Falls Town Band
Tuesdays, 7 p.m., Lincoln Park, Enosburg Falls.

Live at McLurg's
Fridays & Saturdays, 7 p.m., McClurg's Scottish Pub, 303 Main St., Enosburg Falls.

Cold Hollow Sculpture Park
Opens June 11, Thursday-Sunday + holidays, noon-6, 4280 Boston Post Rd., Enosburgh. coldhollowsculpturepark.com.

St. Albans Bay Farmers Market
Thursdays beginning May 26, 4:30-7:30 p.m., St. Albans Bay Town Park, St. Albans Bay.

Richford Farmers Market
Saturdays beginning June 4, 9 a.m.-1 p.m., 21 Main St., Richford

Northwest Farmers Market
Saturdays beginning May 14, 9 a.m.-2 p.m., Taylor Park, St. Albans City.



COMING IN LATE JUNE & EARLY JULY

3rd Annual Chase for the Lake Triathlon
Pontoon Boat Race

4th of July

Light Up Lake Carmi

Franklin Fire Department BBQ

Concert on the Town Green

STAY TUNED FOR DETAILS!





MULLEN INSURANCE

Mullen Insurance is licensed in 9 states & represents more than 25 national & regional companies

We are an industry leader representing

5 of the **10** largest commercial insurance writers in the US

#1 insurer of farms nationally

Offering multiple **A+** rated insurers

#1 Insurer of fire sprinkler contractors in Vermont

#1 Insurer of fuel oil & propane dealers in VT

TRAVELERS

UNION MUTUAL
Live life well protected

ARGO
GROUP

AEGIS
SPECIALTY INSURANCE SERVICES

AmTrust

Acadia
INSURANCE

VM
Since 1828

Nationwide

MARKEL

ZURICH

THE CONCORD GROUP
INSURANCE COMPANIES
Est. 1928

CHUBB

GREAT AMERICAN

Berkshire Hathaway
GUARD Insurance Companies

THE MAIN STREET
AMERICA GROUP

MetLife

Plymouth Rock

Harleysville

LANCER
INSURANCE
The Difference is Our Attitude.

Aflac

TANGRAM
Insurance Services

FOREMOST
INSURANCE GROUP

MERCHANTS
INSURANCE GROUP

Colonial Life

Mutual of Omaha

DELTA DENTAL

PROGRESSIVE

PHILADELPHIA
INSURANCE COMPANIES

MEMIC

140 South Main St., Suite 2

St. Albans, VT 05478

802-527-0121

Testimony, from pg. 8

Now for some challenges:

Since the aeration system has been deployed, we have yet to have a year when the system has run throughout the entire summer ... While the data we have received from UVM points to the success of the system when it's functioning properly, if we don't find a long term and sustainable answer to these issues, I fear the significant financial investment in this technology will no longer be worth the annual electrical and maintenance investments required to keep this system running ...

While we recognize the significant clean water funds that are being pumped into the state, we continue to be challenged to find funding for our local watershed coordinator, local outreach and shovel ready projects, and the significant coordination required to collaborate with all those working to improve water quality at the lake.

We are concerned about the internal conflict we see between the Agency of Agriculture, Food and Markets and the Agency of Natural Resources in the oversight and regulatory obligations associated with the state's clean water initiatives. We feel strongly that the state needs to empower one state agency with the oversight, management and enforcement of the state's water quality standards ...

Due to the challenges with the aeration system and its inability to mitigate the impacts of internal phosphorous loading, now may be the time to explore an alum treatment for the lake ...

In my opinion, we need to prioritize the following:

We need to ensure that all the critical pathway projects associated with the Lake Carmi Lake in Crisis response plan get accomplished.

We need to increase the lake in crisis funding well beyond the \$50,000 currently being allocated

We need to continue to financially support the data collection efforts currently being conducted by UVM staff ...

We need to continue to assist our farming community to provide financial support, equipment and training to assist in reducing the agricultural impacts on our lake.

We need to immediately fill the Lake Wise coordinator and aquatic invasive species positions that are currently being held vacant within DEC.

We need continued improvement of our state, local and private roads.

We need AOT to be a partner at our TMDL coordination committee meetings on a regular basis.

We need the VT Department of Health to continue to examine the health related issues associated with exposures to blue green algae ...

We need to consider a broadcast manure spreading ban in our watershed ...

For a state that is such an outspoken environmental advocate, we need to make the commitment to continue to prioritize our clean water efforts with powerful legislation, the appropriate level of oversight and regulation, and a continued financial commitment.

On behalf of our campers association, watershed committee and our clean water partners, I again want to say thank you for the opportunity to be here today ...



THE ABBEY

**THE FOOD IS GREAT, THE BEERS ARE COLD,
AND FRIENDS ARE PLENTY**

OPEN 11:30AM-10PM WED-SUN
THURS - KARAOKE | FRIDAY - LIVE MUSIC



A PLACE FOR
EVERYONE

LCCA MEMBER OWNED

**JOIN US IN THE PUB OR
OUTDOORS ON THE BACK 40**

LESS THAN 10 MINUTES AWAY!
6212 VT ROUTE 105 ENOSBURG FALLS, VT 05450

(802) 933 - 2223
WWW.THEABBEYRESTAURANT.NET

Versatility runs in the family.



BX Series 16.6-24.8 HP



Together we do more.™

Call today to schedule a demo of the versatile BX Series sub-compact tractor. Part of our under 100 HP tractor line-up rated #1 for reliability.*

- Variety of available attachments
- Easy-to-use hydrostatic transmission
- Swift-Tach Loader is easy to install and remove
- ROPS height fits easily in standard size garages



MIDDLEBURY | ST. ALBANS | DERBY | BERLIN | ESSEX
champlainvalleyequipment.com • 802-388-4951

KubotaUSA.com
*2020 Progressive Farmer Reader Insights Award for Fewest Reported Problems Overall in the category of Small Tractor (Under 100 Horse Power). Award based on 2020 Progressive Farmer Readers Insights Tractors Study. © Kubota Tractor Corporation, 2021. This material is for descriptive purposes only. Kubota disclaims all representations and warranties, express or implied, or any liability from the use of this material. For complete warranty, safety and product information, consult your local Kubota dealer. For the complete disclaimer, go to KubotaUSA.com/disclaimers and see the posted disclaimer.

2022 LCCA Fishing Contest

We hope there is increased participation in the 2022 LCCA Fishing Contest this year since three trophies and seven honorable mention certificates were not awarded last year due to lack of entries.

This contest is for large and smallmouth bass, walleye, northern pike, and perch. Twenty trophies in each division are available, along with five honorable mention certificates.

Of special note is the fact that two youth entrants caught the largest fish of the species in 2021. Jaylen Grove had the largest northern pike at 6.56 pounds, and Findlay McGrath had the largest largemouth bass at 3.31 pounds!

There are two divisions in the 2022 LCCA Fishing Contest. The Adult division is

for those older than 15. The Youth division is for those 15 and younger. In both divisions, the contest includes not only trophies for first and second place, but also recognition for third place with a certificate of honorable mention.

The fishing contest begins on Saturday, May 28, and ends on Labor Day, Sept. 5.

The winners will be notified and can pick up their trophies and certificates at the Franklin Town Clerk's office. All entries must conform to the State of Vermont fishing regulations. Winners for each species will be determined by the weight of the fish, with the length being used to break a tie. The official weighing and measuring will be done at the Franklin General Store. Fish being weighed and measured must be dead and in a

plastic bag. Each angler must fill out the official weight in form at the store. Anyone is eligible to enter their catch as long as it came from Lake Carmi.

You can pick up a copy of the 2022 Vermont Fishing Guide at the Franklin General Store or the Franklin Town Clerk's office. Make sure you know the rules and can identify the species. A fishing license is required for anyone 15 and older.

Any youth who enters a fish in the contest is invited to take a lollipop from the container near the entry form clipboard each time they enter a fish in thanks for becoming a participant in this contest.

Please call Ernie Englehardt at (802) 223-5529 if you have any questions about the contest.

Vermont's Community Bank

49 Sampsonville Road, Enosburg Falls • 802-933-8500 • Monday - Friday 8:00 a.m. - 5:00 p.m.

SERVICES:

- 24-Hour ATM
- Drive-Up ATM
- Drive-Up Window
- Night Deposit
- Safe Deposit Box
- Notary
- Mobile Wallet



**Community
National Bank**

Equal Housing Lender  Member FDIC

Vermont's Community Bank

To learn about all of
our services, please visit
communitynationalbank.com



communitynationalbank.com

2021 LCCA Fishing Contest Results

There were 26 entries in the 2021 contest, 18 of which won either a trophy or certificate of honorable mention. Thirty awards were available to be won.

Anyone who fishes in Lake Carmi is encouraged to take their possible winning fish to the Franklin General Store, where they will be weighed and measured.

Trophies were awarded for first and second place entries. Winners for each

species were determined by the weight of the fish, with the length being used to break a tie. Certificates of honorable mention were awarded for the third largest fish.

As you enter your fish during the 2022 season, please take a photo of the possible winner and fish and email it to LCCA news at editors@lakecarmi.vt.com so photos of the winners can be included in future newsletters.

Also note that many trophies and certificates of honorable mention went unclaimed because there were no entries at all. Take a trip to the Franklin General Store, enter your catch, and perhaps win a trophy!

Please call Ernie Englehardt at (802) 223-5529 or email logcabin@lccca.com if you have any questions about the contest.

2021 Winners

Youth Division (Age 15 and under)

Perch

Will Bailey: 0.61 lb., 10"
Wes Bailey: 0.57 lb., 10.25"
Northern Pike
Jaylen Grover: 6.56 lb., 31"

Walleye

Will Bailey: 1.59 lb., 16.5"
Smallmouth Bass
Paul Bertrand: 3.06 lb.

Largemouth Bass

Findlay McGrath: 3.31 lb., 17"

Adult Division (Over 15)

Perch

Frank Reed: 0.76 lb., 12"
Ernie Englehardt: 0.56 lb., 11"
Nathan Englehardt: 0.51 lb., 10.75"

Northern Pike

Margaret Hoffman: 5.91 lb., 31"
Diane LaRose: 5.23 lb., 31"
Nathan Englehardt: 2.62 lb., 23"

Walleye

Nick Bartlett: 7.57 lb., 29"
Richard Hall: 6.33 lb., 26"
Scott Whitney: 4.6 lb., 25"

Smallmouth Bass

David Bessette: 3.54 lb., 18.25"
Joe Craig: 3.51 lb., 19.5"
Tony Bessette: 3.4 lb., 19"

Largemouth Bass

Shannon Benton: 1.89 lb., 14.75"



Clockwise from top: Richard Hall with his second place walleye, Diane LaRose with her second place northern pike, and Margaret Hoffman with her first place northern pike.





In Memoriam




Larry Lionel Tatro (Nov. 17, 1947-Feb. 16, 2022)

Larry Lionel Tatro, 74, of Patton Shore Road, passed away Wednesday, Feb. 16, 2022.

For a full obituary, please visit gossfs.com/obituary/larry-tatro.



Edward Mayhew (Nov. 16, 1938-April 21, 2022)

Edward Mayhew, 83, of Mullen Shore Road, passed away Thursday, April 21, 2022.

For a full obituary, please visit necrocanada.com/obituaries-2022/edward-mayhew-1938-2022.



Franklin Telephone Company, Inc
PO Box 96
5217 Main St
Franklin
285-9911
High Speed Internet
"Local" & Long Distance
Telephone Service

Wood Meadow Market

An Organic & Natural Habitat

Owners: Patrick & Kirsten Hayes

Wood Meadow Market
Organic, Natural & Gluten Free

342 Main Street
Enosburg Falls, VT 05450

802-933-2256
pkhayes80@yahoo.com

**This summer,
LAKE IT EASY
At Lake Carmi!**

It's time once again for the
LCCA's annual
**Light Up
the Lake**
decorating contest.

This year's Lake it Easy
categories include:

**Most Creative
Most Patriotic
Most Inviting**

Decorate your camp
for the 4th of July.
Judging takes
place July 8.



The Great Outdoors

Nathan & Avril Cochran, Proprietors


117 Waterfront Plaza,
Newport, VT 05855
P | 802-334-2831 F | 802-334-5877

65 North Gate Plaza
Morrisville, VT 05661
P | 802-888-3718

162 Main Marketplace
Enosburg Falls, VT 05450
P | 802-933-4815

www.GreatOutdoorsVermont.com

Enjoy a great game of golf at Enosburg Falls
Country Club 802-933-2296

53 Elm St.
Enosburg Falls, Vt
EFCCVT.com



Keep up with taking it easy at

lakecarmi.vt.com



Working Dog Septic Service



- Septic Tank Pumping
- Sewer Jetting & Thawing
- Port-O-Potties
- Camera Inspection
- Pump Station Service
- Tank Inspections
- Over 30 Years Experience

1-888-949-9969

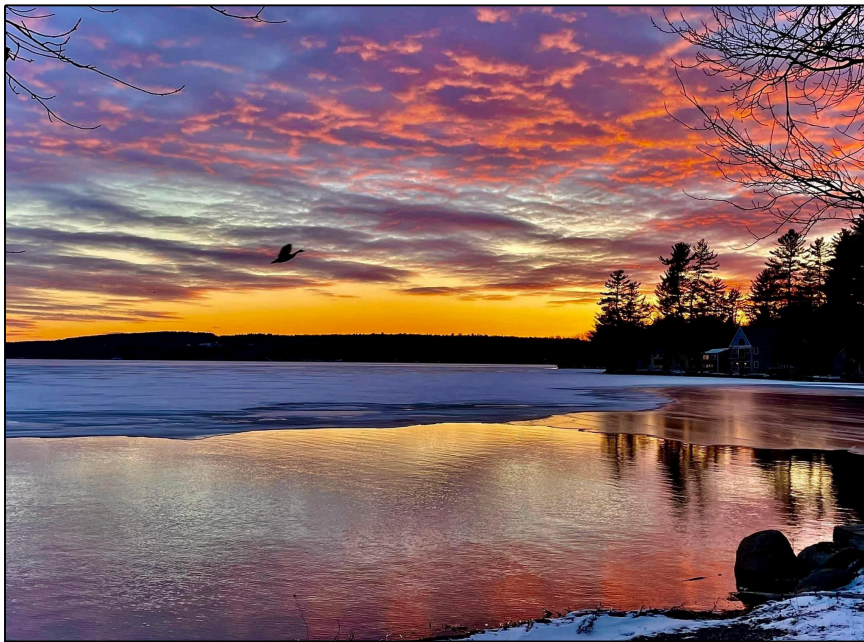
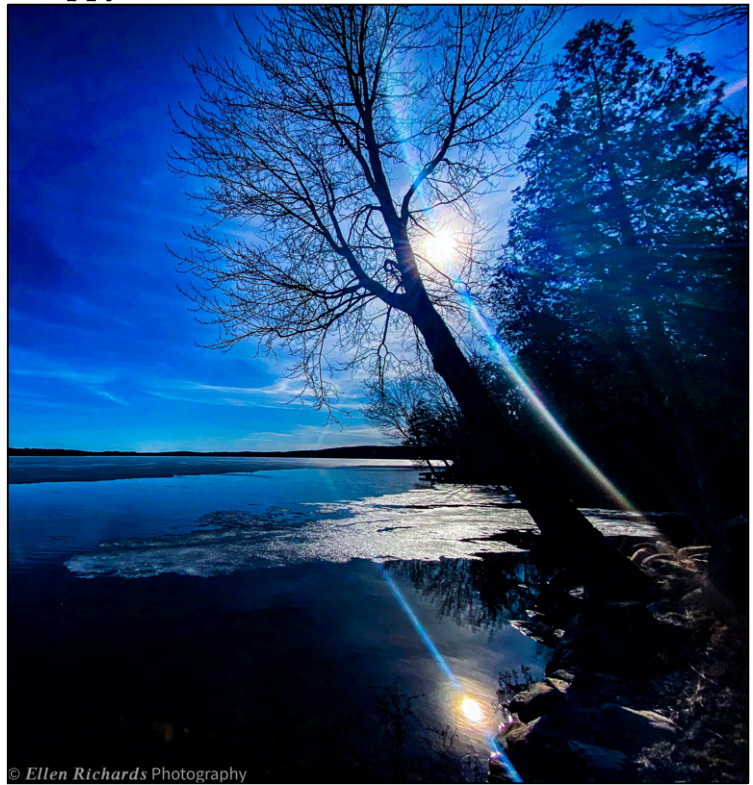
Toll Free

Cell: 802-343-1657 • JR Young

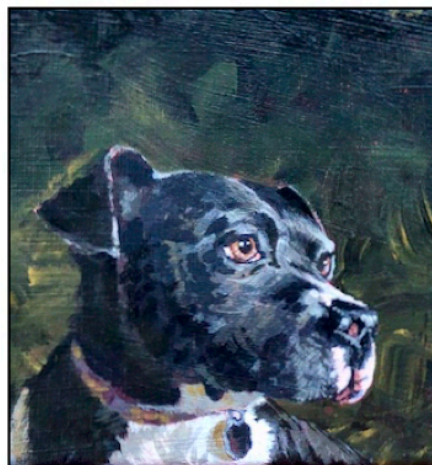


WINTER ON CARMI

Life goes on during Lake Carmi's chilly off-season, and regardless of the time of year, the lake and its surroundings always give us amazing sights to see. From cobalt reflections to nesting bald eagles to ice fishing, there's plenty to enjoy here even on the coldest days.



From top, photographs courtesy Ellen Richards, Linda Craig, and David Pratt.



ethandezotelle.com

A Franklin resident in pursuit of the writer's life, sharing thoughts on family, writing, culture, life in Vermont, and Ziti the dog.

Now accepting bids from Elon Musk.

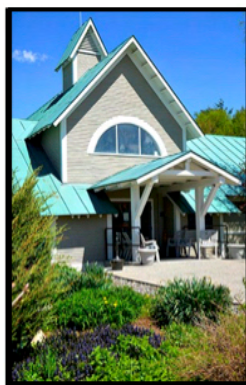
CLASSIFIEDS

Members of the LCCA who are current with their dues are permitted a free classified ad in all five issues of our newsletter. Merchandise ads are only run for two issues, unless renewed. Camp rentals can run for the entire season, but if you have no more availability, please notify the editor.

COTTAGE FOR RENT: Mullen Shore; May thru Oct – Call (802) 373-1173 for details.

COTTAGE FOR RENT: Hammond Shore Rd, fully furnished, bring your own linens. (802) 285-6737.

MAPLE SYRUP (all sizes), Raw Honey, Apples and Apple Cider (during season), Call Charlie Magnant: 285-2290.



Ave Maria
Community Care Homes, Inc.™
Dedicated to Caring

Exceptional Elder Care for over 29 Years
Level III Senior Living and Memory Care
Our Lady of the Meadows & Ave Maria
Richford, VT~802-848-7106
www.avemariacare.com

BERTRAND ELECTRIC

www.BertrandElectricVT.com

Corey Bertrand
Electrical Contractor
Master Electrician

580 St. Albans Road
Swanton, Vermont 05488
contact@BertrandElectricVT.com
www.BertrandElectricVT.com

Main: 802-528-5289
Cell: 802-782-3502
Fax: 802-528-5360

RESIDENTIAL • COMMERCIAL • INDUSTRIAL

LAKE CARMI ASSOCIATION NEWS

Lake Carmi Association News is published monthly from May through September by the Lake Carmi Campers Association. Lake Carmi Association is available in print and online at lakecarmivt.com.

Editors: Peter Benevento, Polly Gadbois, Suzanne Hull-Casavant, Rhonda Somers-Fletcher, Ethan Dezotelle, Alison Dezotelle

Ad Sales: Polly Gadbois

Design & Production: Ethan Dezotelle

Submissions to Lake Carmi Association news are always welcome at editors@lakecarmivt.com.

Lake Carmi Campers Association Mission Statement

The Lake Carmi Campers Association, Inc., is dedicated to conserving our unique natural resources, improving and enhancing the quality of life and the environment, for all Lake Carmi residents and visitors. In cooperation with local and state authorities, the association shall provide educational, cultural, and recreational activities, as well as water quality management and safety education initiatives. Further, the association will provide a medium through which information and educational programs and materials may be distributed throughout the community.



Pam Deuso

**Your Lake Carmi
Tupperware
Consultant**

friend.my.tupperware.com
(802) 752-0635

Tupperware®



EGO TOOLS HELP YOU POWER THROUGH ANY JOB

In every season, you can count on EGO power, innovation and performance to help you tackle all your outdoor tasks.



Green's Ace Hardware

6 Railroad St
Enosburg Falls, VT 05450
(802) 933-7500

\$10 off

on your next purchase of \$30
or more at Green's Ace Hardware

* Terms and Exclusions: Coupon valid at store named on coupon for one transaction only. Valid through September 30, 2022. Not valid on sale, discounted and clearance priced merchandise, rental, in-store services, Ace gift cards, fuel, previously purchased merchandise, power tools, on the following branded products: Weber®, Nest, Stihl®, YETI®, Traeger®, Big Green Egg®, Joanna Gaines and other items that each participating store may designate, or in conjunction with any other coupon, excluding Rewards. Any purchase minimum is calculated before applying Reward redemption and before tax. Coupon may not be sold or transferred. Void if photocopied or duplicated. No cash value. Coupon cannot be replaced if merchandise is returned. Additional exclusions may apply. See store for details.

